

P Series | 20P44 | 25P44 | 30P44

**LIFTKING**  
Manufacturing Corp.

CONSTRUCTION FORKLIFTS





## Let Us Do The Heavy Lifting

If your success depends on the efficient and effective lifting of heavy loads on any job site then, you can count on the complete line of Liftking forklifts to perform above and beyond the call of any construction project. Liftking has more than 45 years of expertise in designing, developing and manufacturing materials handling equipment to withstand the toughest conditions.



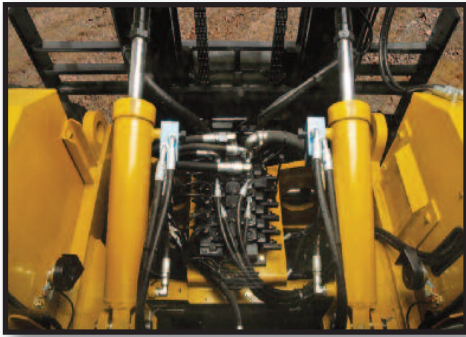
## The features you need

- Extreme Duty true Rough Terrain design
- Excellent power to weight ratio
- Full synchromesh power-shift transmission
- Comfortable and functional cab
- Ergonomically designed controls
- Easy access to all maintenance points
- 4-wheel steer with tight turning radius
- Various attachments available

**CLOSED CAB:** The all-weather closed cab option is equipped with sound insulation, defroster fan, heavy duty heater, ergonomic controls, sliding windows, removable doors, and a 360 degree visibility for safe, efficient operation.

**ENGINE:** Powerful Perkins 4-Cylinder Tier 3 (Stage IIIA) Turbo Diesel offers minimal fuel consumption with simplicity of maintenance through easy access sliding hood. Optional 6-cylinder Turbo Diesel available.

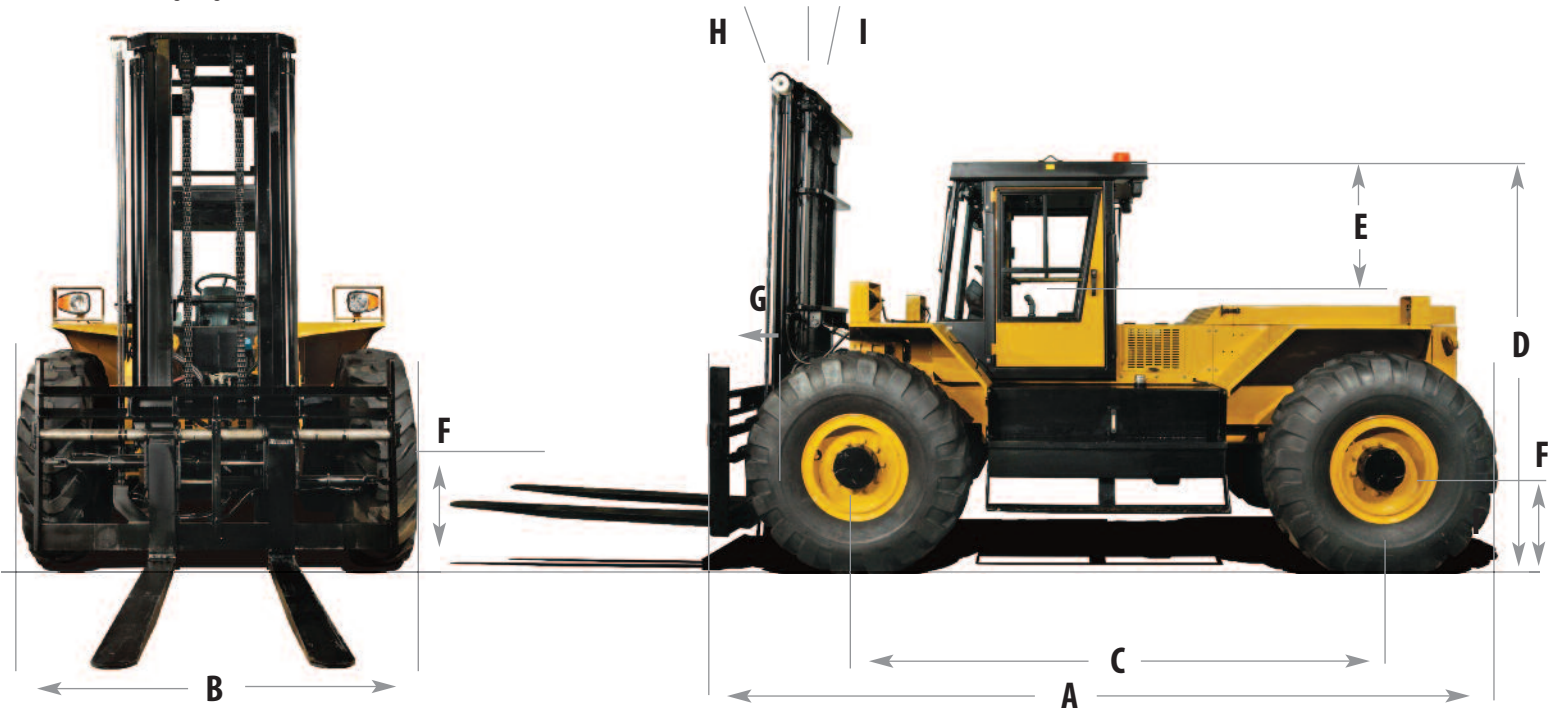




**HYDRAULICS:** Programmable multi-function electric joystick combines ease of operation with exceptional accuracy. The heavy duty components have been spec'd to meet demanding rough terrain conditions.

**STEERING CONTROL:** Fully hydraulic power steering with 3 modes (4-wheel, Crab, 2-wheel) provides versatility in the toughest terrains.

**AXLES :** Planetary gear reduction at each hub allows efficient power transfer to the ground while 20 degrees of total axle oscillation maintains traction at all times.



	Ref	LK20P44	LK25P44	LK30P44-4CYL	LK30P44-6CYL
Lift capacities @ 24 inch load centre		20,000 lbs (9,091 kg)	25,000 lbs (11,340 kg)	30,000 lbs (13,608 kg)	30,000 lbs (13,608 kg)
Overall length (without forks)	A	220" (5,588 mm)	240" (6,096 mm)	245" (6,223 mm)	250" (6,350 mm)
Overall width	B	100" (2,540 mm)	100" (2,540 mm)	100" (2,540 mm)	100" (2,540 mm)
Wheelbase	C	135" (3,429 mm)	135" (3,429 mm)	135" (3,429 mm)	135" (3,429 mm)
Height to top of overhead guard	D	96.5 in / 2,451 mm	96.5 in / 2,451 mm	96.5 in / 2,451 mm	96.5 in / 2,451 mm
Distance from seat to overhead guard	E	40" (1,016 mm)	40" (1,016 mm)	40" (1,016 mm)	40" (1,016 mm)
Ground Clearance (at rear axle)	F	12" (305 mm)	14" (356 mm)	14" (356 mm)	14" (356 mm)
Forward Projection	G	32 in / 813 mm	32 in / 813 mm	32 in / 813 mm	32 in / 813 mm
Mast Tilt - Forward	H	15°	15°	15°	15°
Mast Tilt - Rearward	I	10°	10°	10°	10°
Track, Front & Rear		82" (2,083 mm)	82" (2,083 mm)	82" (2,083 mm)	82" (2,083 mm)
Turning Radius		234" (5,944 mm)	234" (5,944 mm)	234" (5,944 mm)	258" (6,553 mm)
Weight		38,500 lbs (17,500 kg)	41,500 lbs (18,864 kg)	45,500 lbs (20,682 kg)	46,440 lbs (21,109 kg)
Travel speed		13 mph (20 km/h)	13 mph (20 km/h)	13 mph (20 km/h)	13 mph (20 km/h)
Grade ability		15%	15%	15%	15%

Specifications P Series 20P44 | 25P44 | 30P44

**ELECTRIC**

System Type	12 volt negative ground with circuit breaker protection
Battery	1000 AH, Maintenance Free
Alternator	85 A
Neutral Safety Start	Yes, with anti re-start protection
Lighting	Headlights, tail brake lights, reverse lights, turn signals

**TIRES**

LK20P44 only	16.00 x 24, all terrain
all except LK20P44	16.00 x 25, all terrain

**CAPACITIES**

Fuel Tank	70 US gal (265 liters)
Hydraulic System	70 US gal (265 liters)

**ENGINE (except LK30P44-6CYL)**

Model and Type	1104D-E44TA Turbo Diesel, 4 cylinder
Horsepower	142HP (106 KW) @ 2200 RPM
Torque	410 ft. lbs (556 Nm) @ 1400 RPM
Displacement	269 cu in. (4.4 liters)

**ENGINE (only LK30P44-6CYL)**

Model and Type	1106D-E66TA Turbo Diesel, 6 cylinder
Horsepower	225HP (168 KW) @ 2200 RPM
Torque	442 ft. lbs (600 Nm) @ 800 RPM
Displacement	403 cu in. (6.6 liters)

**TRANSMISSION**

Type	Dana Power Shift with electric shift
Speeds	4
Drive	Full-time 4WD

**AXLES**

Oscillation	10 degrees per side
Static Rating	40,000 lbs / 18,144 kg
Front Drive Axle	Heavy Duty final drive outboard planetary
Type	Planetary
Brakes (except LK30P44-6CYL)	Wet, multi-disc
Brakes (only LK30P44-6CYL)	Dry disc, caliper

**STEERING**

Modes	4WS, Crab, 2WS
Steering Turns Lock To Lock	4

**HYDRAULIC SYSTEM**

Pump Type	Gear
Flow Rating	25 GPM @ 2200 RPM
Pressure Rating	2500 PSI / 173 Bar

**Mast Specifications**

O.A.H.R.	MAST TYPE	O.A.H.L.	FREE LIFT (Optional)
144 in / 3,658 mm	2 Section	116 in / 2,946 mm	72 in / 1,829 mm
168 in / 4,267 mm	2 Section	128 in / 3,251 mm	84 in / 2,134 mm
168 in / 4,267 mm	3 Section	98 in / 2,489 mm	56 in / 1,422 mm
252 in / 6,400 mm	3 Section	122 in / 3,100 mm	84 in / 2,134 mm
336 in / 8,534 mm	3 Section	148 in / 3,759 mm	112 in / 2,845 mm
336 in / 8,534 mm	4 Section	122 in / 3,100 mm	84 in / 2,134 mm

**STANDARD EQUIPMENT:**

Heavy Duty Clearview Roller Mast with Dual Chains • Hydraulic Mast side shift • FOPS Operator compartment • Power Steering • Power Assisted Brakes • Limited Slip Differential • Tier 3 Turbo Diesel Engine • Headlights, tail lights, reverse lights, and turn signals with safety guards • External side view mirrors. • Wide-grip Handrails • Extra wide steps. • Electric Horn and automatic Backup alarm • Tilt steering column with anti-restart ignition and neutral safety interlock • Adjustable vinyl suspension seat with arm rests and retractable safety belt • Front fenders and rear fenders are extra thick steel for maximum safety and durability • Engine oil pressure gauge, fuel gauge, tachometer, hour meter, and warning lights • Lockable sliding engine hood, fuel and hydraulic caps • Operator, maintenance and illustrated parts manuals included • 1 Year 2000 hours limited warranty (2 year engine warranty)

**OPTIONAL EQUIPMENT:**

Various mast/carriage/fork types and sizes • Various engines • Bucket attachments • High durability yellow paint with black trim • Strobe Light • Additional lighting • Auxiliary Hydraulics • DS Rated • Tinted Windows • Sunvisor • Hydraulic filter monitor • Deadman seat • Safety-Start Seatbelt • Heated Mirrors • Cold Weather Package • 12V Outlet • IQAN Engine Diagnostics • Radio • Cupholders • Enclosed all weather operator compartment with HD heater, sliding windows, wipers, lift-off doors • ROPS Operator compartment • Air Conditioning • Air ride suspension seat with arm rests and retractable safety belt • Foam filled tires • Towing package • Frame level • Contact dealer for other options.

Liftking reserves the right to make changes in specifications shown, herein, and improvements, or discontinue manufacture at any time without notice or obligation. The information contained herein is general in nature and is not intended for specific application purposes.

7135 Islington Avenue, Woodbridge, Ontario. L4L 1V9  
Tel: 905-265-3965 | Fax: 905-851-6396